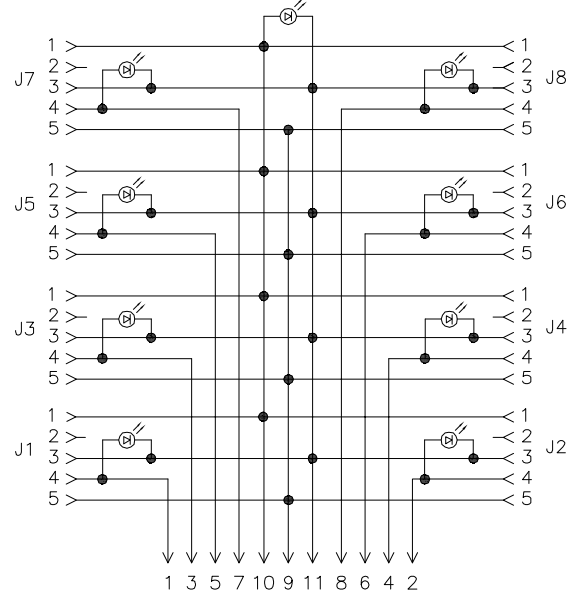
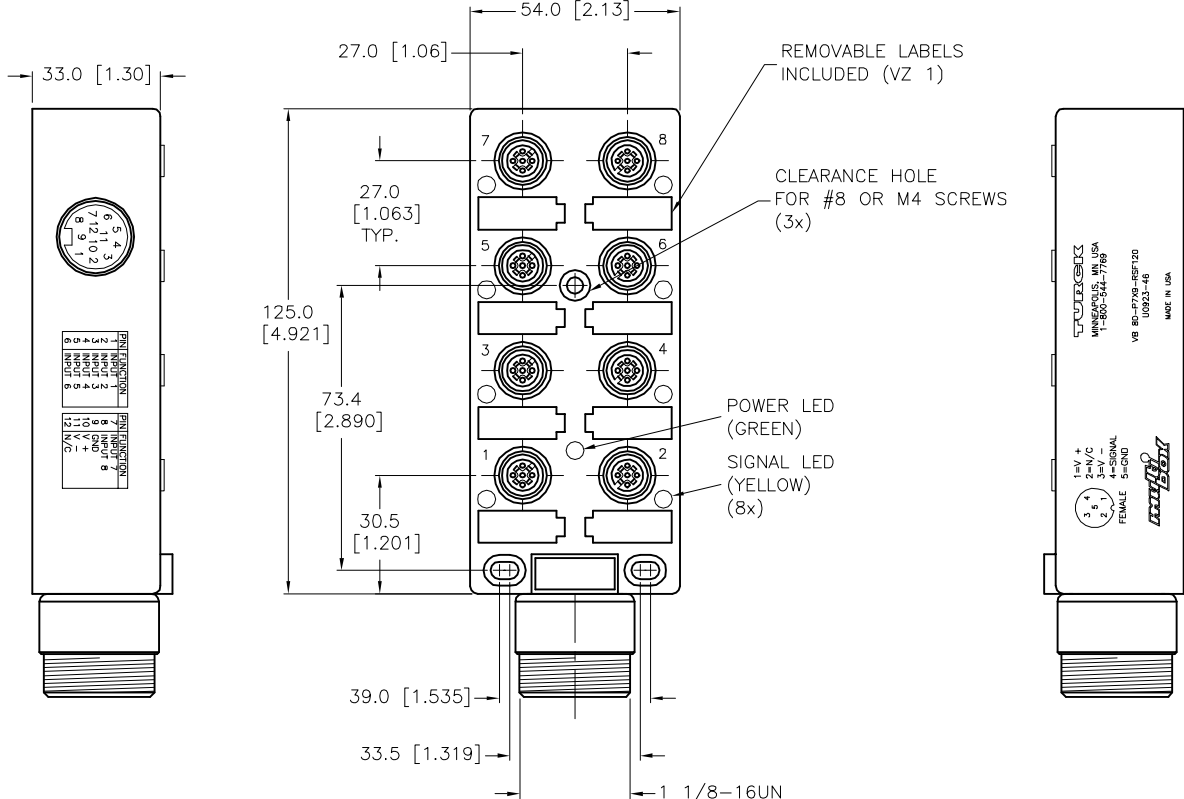


SPECIFICATIONS	
HOUSING/COLOR	NYLON/YELLOW
RECEPTACLE	NICKEL-PLATED BRASS
CONTACT CARRIERS/COLOR	NYLON/BLACK (J1-J8), TPU/YELLOW (P1)
CONTACTS	GOLD-PLATED BRASS
SEALING RING	VITON O-RING
OPERATING VOLTAGE	10-48 VDC
OPERATING CURRENT	4.0 AMPS PER PORT, 7.0 AMPS TOTAL
SPACINGS	to VDE 0110 GROUP C (EUROFAST)
PROTECTION CLASS to DIN 40050	IP 67 - ONLY WHEN ALL RECEPTACLES ARE COVERED WITH PLUGS OR CONNECTED
OPERATING TEMPERATURE	-30°C to +80°C (-25°F to +176°F)



WIRING DIAGRAM

SOURCE DRAWING - FOR REFERENCE ONLY



CLOSURE CAPS (INCLUDED)

RELATED DOCUMENTS 1. 2. 3. 4.	3RD ANGLE PROJECTION	THIS DRAWING IS CONFIDENTIAL AND THE PROPERTY OF TURCK INC. USE OF THIS DOCUMENT WITHOUT WRITTEN PERMISSION IS PROHIBITED.		3000 CAMPUS DRIVE MINNEAPOLIS, MN 55441 1-800-544-7769 (763) 553-7300 (763) 553-0708 fax www.turck.us	
	MATERIAL SEE SPECIFICATION	DRFT RWC	DATE 09/20/04	DESCRIPTION VB 80-P7X9-RSF120	
FINISH SEE SPECIFICATION	ALL DIMENSIONS DISPLAYED ON THIS DRAWING ARE FOR REFERENCE ONLY	APVD	SCALE 1=2.0	IDENTIFICATION NO. U0923-46	
CONTACT TURCK FOR MORE INFORMATION		UNIT OF MEASUREMENT MILLIMETER [INCH]		REV E	
DO NOT SCALE THIS DRAWING		FILE: U0923-46		SHEET 1 OF 1	

E	UPDATED CLOSURE CAPS	TV	09/14/15	48811
REV	DESCRIPTION	BY	DATE	ECO NO.